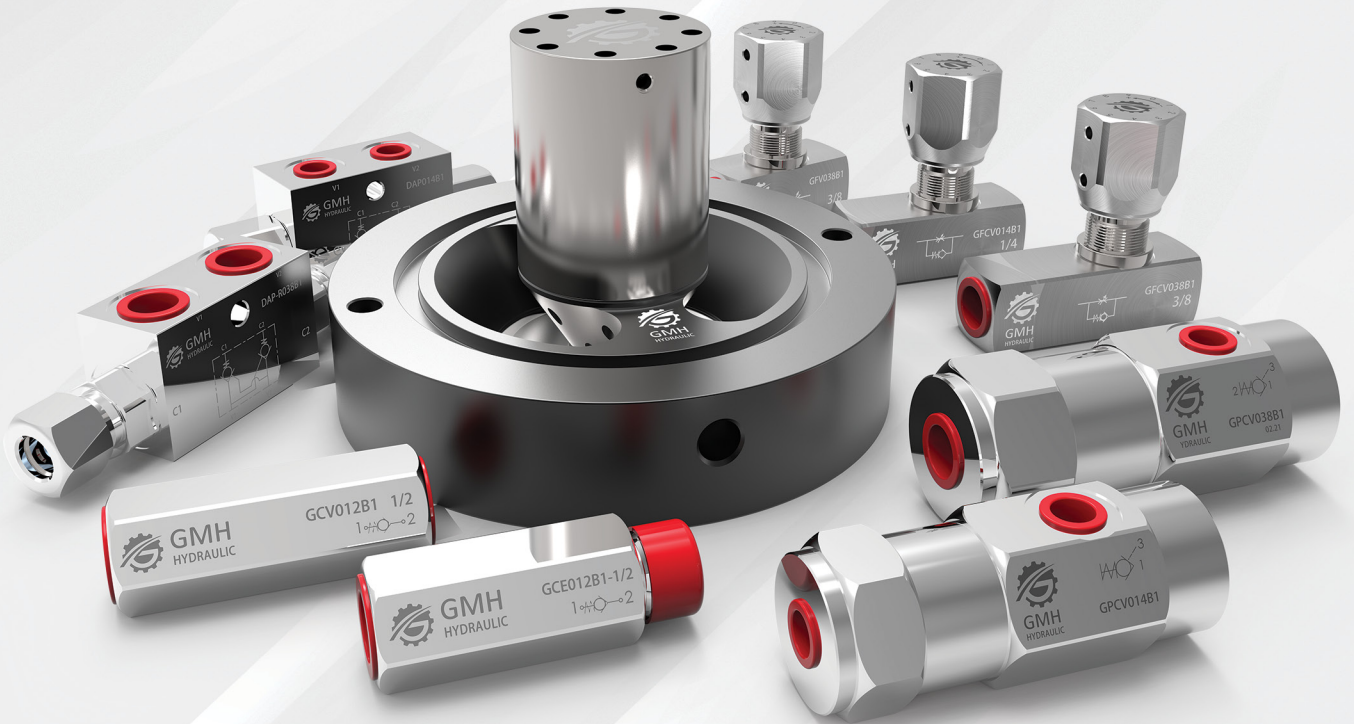




GMH

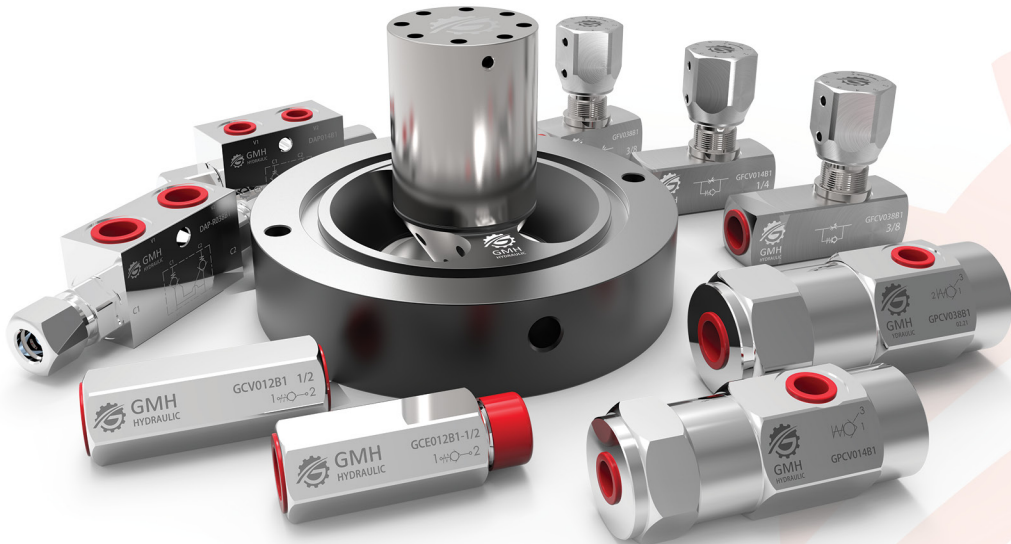
HYDRAULIC



HYDRAULIC VALVES AND COMPONENTS
HİDROLİK VALFLER VE EKİPMANLARI

CONTENTS / İÇİNDEKİLER

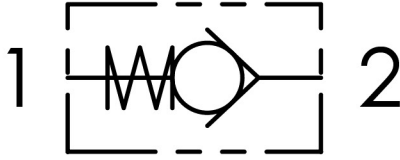
GCV CHECK VALVES - ÇEK VALFLER	1
GCE MALE THREADED CHECK VALVES - ERKEK TİP ÇEK VALFLER	2
GPCV PİLOT CHECK VALVES - PİLOT UYARILI ÇEK VALFLER	3
GFCV UNIDIRECTIONAL FLOW CONTROL VALVES - ÇEKLİ HIZ AYAR VALFLERİ	4
GFV BIDIRECTIONAL FLOW CONTROL VALVES - ÇEKSİZ HIZ AYAR VALFLERİ	5
DAP-R DOUBLE ACTING PİLOT CHECK VALVES - İKİZ HAT TİPİ KİLİT VALFLER	6
DAP DOUBLE ACTING PİLOT CHECK VALVES - İKİZ HAT TİPİ KİLİT VALFLER	7
SVF PREFILL VALVES - ÖN DOLUM VALFLERİ	8
FGP - FGT FLANGES - FLANŞLAR	9



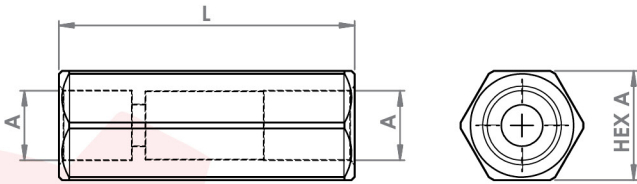
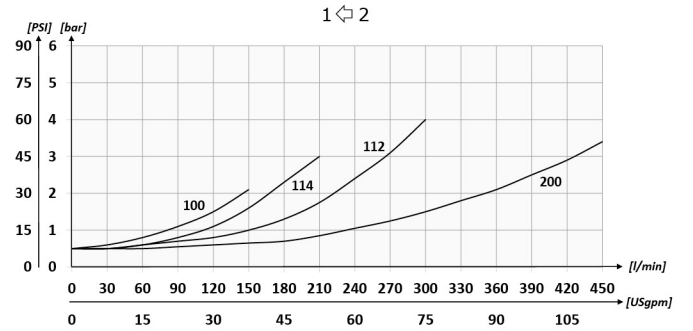
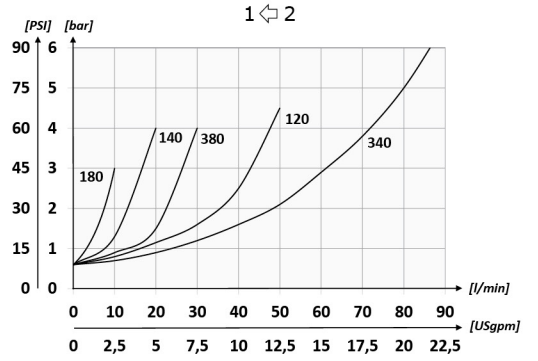
GCV CHECK VALVES - ÇEK VALFLER

Sipariş Kodu / Order Code

GCV	014	B	1
Tip / Type	Ebat / Size	Diş Tipi / Thread Type	Yay Kuvveti / Spring Force
GCV	1/4"	B = BSPP N = NPT U = UNF	1 = 1 Bar 2 = 3 Bar 3 = 6 bar
	3/8"		
	1/2"		
	3/4"		
	1"		
	1 1/4"		
	11/2"		

Hidrolik Şema / Hydraulic Circuit

Direkt Hat Üzerine Montaja Uygun / Suitable For Direct In-Line Installation

Gövde Malzemesi - Body Material	Çelik / Steel DIN1.0715
Mineral Yağ - Mineral Oil	ISO 6743/4 (DIN 51524)
Yağ Viskozitesi - Oil Viscosity	10-500 mm ² /s (10 to 420 cSt)
Yağ Sıcaklığı - Oil Temperature	(-20°C +80°C)
Ortam Sıcaklığı - Environment Temperature	(-20°C +50°C)
İç Kaçak - Leakage	0 - 0.25 mm ³ /min


Performans / Performance

Teknik Özellikler / Technical Specifications

S.N.	Tip / Type	A	Q max (l/min)	P max (Bar)	L (mm)	Hex A (mm)	Ağırlık / Weight (kg)
1	GCV014B1	BSPP 1/4	15	400	55	19	0,1
2	GCV038B1	BSPP 3/8	30		65	24	0,18
3	GCV012B1	BSPP 1/2	50		75	27	0,23
4	GCV034B1	BSPP 3/4	90		86,5	36	0,45
5	GCV100B1	BSPP 1	150	350	110	41	0,73
6	GCV114B1	BSPP 1 1/4	200		123	55	1,5
7	GCV112B1	BSPP 1 1/2	300		138	60	1,85

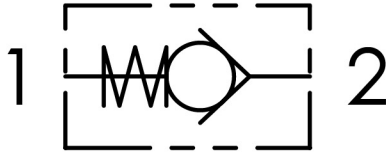
GCE MALE THREADED CHECK VALVES - ERKEK TİP ÇEK VALFLER



Sipariş Kodu / Order Code

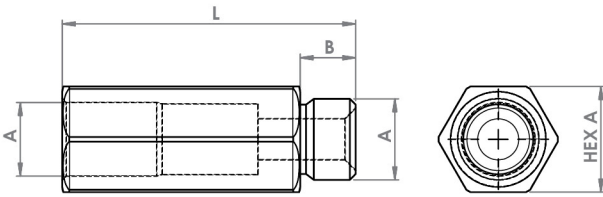
GCE	014	B	1
Tip / Type	Ebat / Size	Diş Tipi / Thread Type	Yay Kuvveti / Spring Force
GCE	1/4"	B = BSPP N = NPT U = UNF	1 = 1 Bar 2 = 3 Bar 3 = 6 bar
	3/8"		
	1/2"		
	3/4"		
	1"		
	1 1/4"		
	1 1/2"		

Hidrolik Şema / Hydraulic Circuit

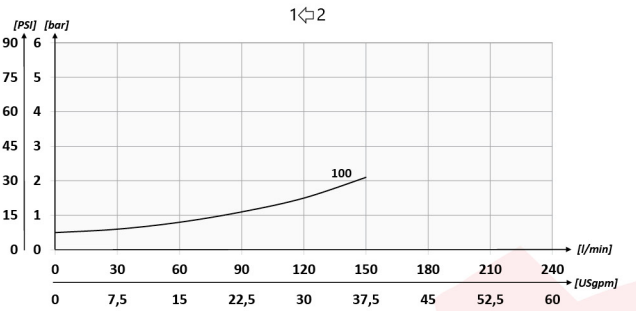
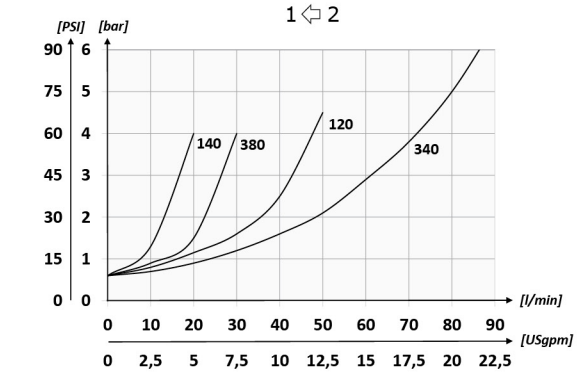


Direkt Hat Üzerine Montaja Uygun / Suitable For Direct In-Line Installation

Gövde Malzemesi - Body Material	Çelik / Steel DIN1.0715
Mineral Yağ - Mineral Oil	ISO 6743/4 (DIN 51524)
Yağ Viskozitesi - Oil Viscosity	10-500 mm ² /s (10 to 420 cSt)
Yağ Sıcaklığı - Oil Temperature	(-20°C +80°C)
Ortam Sıcaklığı - Environment Temperature	(-20°C +50°C)
İç Kaçak - Leakage	0 - 0.25 mm ³ /min



Performans / Performance



Teknik Özellikler / Technical Specifications

S.N.	Tip / Type	A	Q max (l/min)	P max (Bar)	L (mm)	B (mm)	Hex A (mm)	Ağırlık / Weight (kg)
1	GCE014B1	BSPP 1/4	15	400	55	11	19	0,1
2	GCE038B1	BSPP 3/8	30		65	12	24	0,18
3	GCE012B1	BSPP 1/2	50		75	14	27	0,23
4	GCE034B1	BSPP 3/4	90		86,5	16	36	0,45
5	GCE100B1	BSPP 1	150	350	110	19	41	0,73
6	GCE148B1	BSPP 1 1/4	200		123	22	55	1,5
7	GCE112B1	BSPP 1 1/2	300		138	22	60	1,85

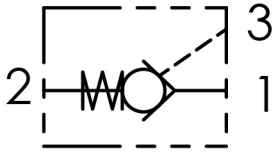
GPCV PİLOT CHECK VALVES - PİLOT UYARILI ÇEK VALFLER



Sipariş Kodu / Order Code

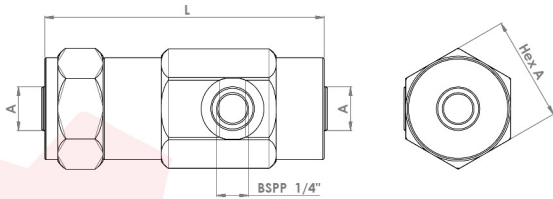
GPCV	014	B	1
Tip / Type	Ebat / Size	Diş Tipi / Thread Type	Yay Kuvveti / Spring Force
GPCV	1/4"	B = BSPP N = NPT U = UNF	1 = 1 Bar
	3/8"		2 = 3 Bar
	1/2"		3 = 6 bar
	3/4"		
	1"		

Hidrolik Şema / Hydraulic Circuit

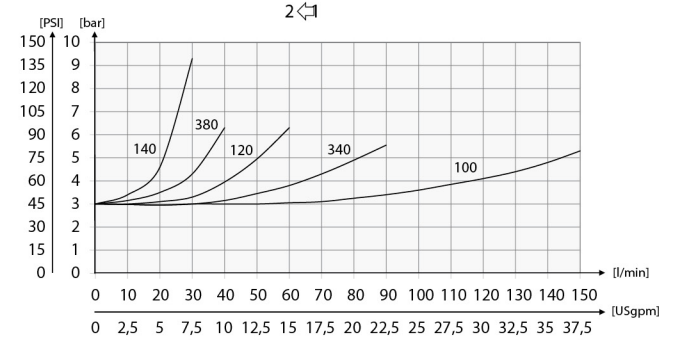
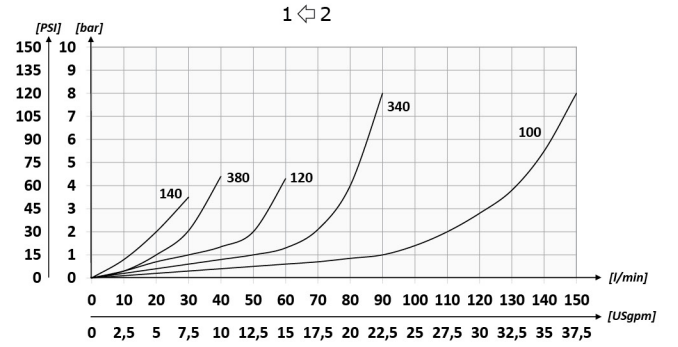


Direkt Hat Üzerine Montaja Uygun / Suitable For Direct In-Line Installation

Gövde Malzemesi - Body Material	Çelik / Steel DIN1.0715
Mineral Yağ - Mineral Oil	ISO 6743/4 (DIN 51524)
Yağ Viskozitesi - Oil Viscosity	10-500 mm ² /s (10 to 420 cSt)
Yağ Sıcaklığı - Oil Temperature	(-20°C +80°C)
Ortam Sıcaklığı - Environment Temperature	(-20°C +50°C)
İç Kaçak - Leakage	0 - 0.25 mm ³ /min



Performans / Performance



Teknik Özellikler / Technical Specifications

S.N.	Tip / Type	A	Q max (l/min)	P max (Bar)	L (mm)	Hex A (mm)	Ağırlık / Weight (kg)	Pilot Oranı / Pilot Ratio
1	GPCV014B1	BSPP 1/4	15	350	96	36	0,73	1:5.3
2	GPCV038B1	BSPP 3/8	30		109	41	1	1:4.4
3	GPCV012B1	BSPP 1/2	50		122	41	1,1	1:4.2
4	GPCV034B1	BSPP 3/4	90		132	55	2,1	1:4.0
5	GPCV100B1	BSPP 1	150		166	65	3,6	1:4.1

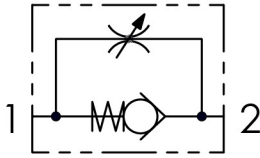
GFCV UNIDIRECTIONAL FLOW CONTROL VALVES - ÇEKİLİ HIZ AYAR VALFLERİ



Sipariş Kodu / Order Code

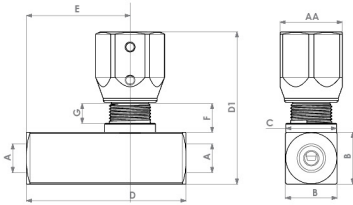
GFCV	014	B	1
Tip / Type	Ebat / Size	Diş Tipi / Thread Type	Yay Kuvveti / Spring Force
GFCV	1/4"	B = BSPP N = NPT U = UNF	1 = 1 Bar 2 = 3 Bar
	3/8"		
	1/2"		
	3/4"		
	1"		
	1 1/4"		
1 1/2"			

Hidrolik Şema / Hydraulic Circuit

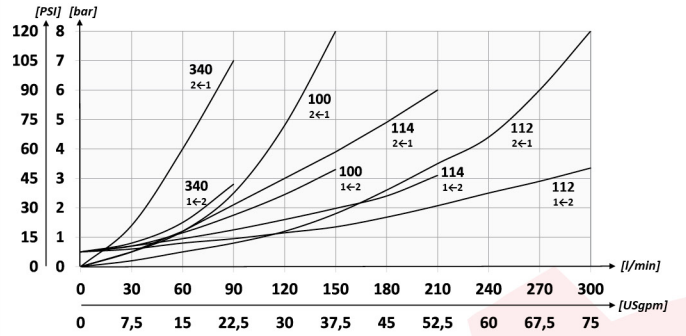
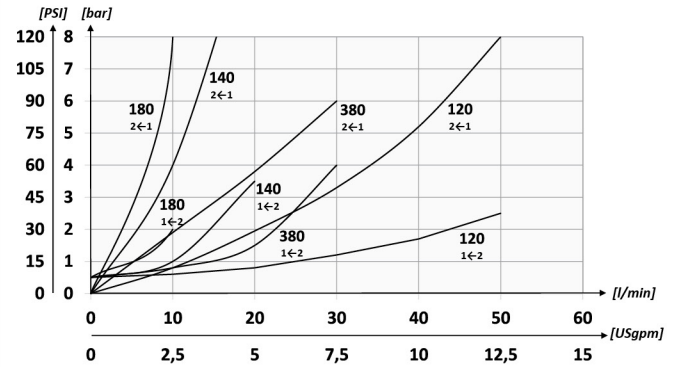


Direkt Hat Üzerine Montaja Uygun / Suitable For Direct In-Line Installation

Çövde Malzemesi - Body Material	Çelik / Steel DIN1.0715
Mineral Yağ - Mineral Oil	ISO 6743/4 (DIN 51524)
Yağ Viskozitesi - Oil Viscosity	10-500 mm ² /s (10 to 420 cSt)
Yağ Sıcaklığı - Oil Temperature	(-20°C +80°C)
Ortam Sıcaklığı - Environment Temperature	(-20°C +50°C)
İç Kaçak - Leakage	0 - 0.25 mm ³ /min



Performans / Performance



Teknik Özellikler / Technical Specifications

S.N.	Tip / Type	A	Q max (l/min)	P max (Bar)	AA (mm)	B (mm)	C (mm)	D (mm)	D1 (mm)	E (mm)	F (mm)	G (mm)	Ağırlık / Weight (kg)
1	GFCV014B1	BSPP 1/4	15	400	30	25	24,5	66	74	40	14	9,5	0,4
2	GFCV038B1	BSPP 3/8	30	400	30	25	24,5	77	74	51	14	9,5	0,43
3	GFCV012B1	BSPP 1/2	50	300	30	30	29,5	91	80	59	14	9,5	0,67
4	GFCV034B1	BSPP 3/4	80	300	36	40	39,5	112,5	109	72	23,5	16	1,3
5	GFCV100B1	BSPP 1	150	300	36	45	39,5	141	114	90	23,5	16	2,05
6	GFCV114B1	BSPP 1 1/4	200	250	40	55	49	155	136	104	23,5	13	3,32
7	GFCV112B1	BSPP 1 1/2	300	200	40	65	49	168	146	117	23,5	13	4,7

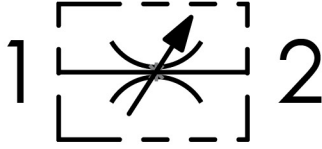
GFV BIDIRECTIONAL FLOW CONTROL VALVES - ÇEKSİZ HIZ AYAR VALFLERİ



Sipariş Kodu / Order Code

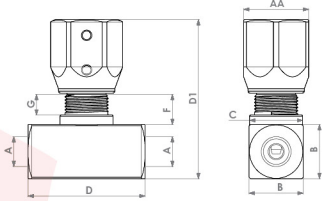
GFV	014	B
Tip / Type	Ebat / Size	Diş Tipi / Thread Type
GFV	1/4"	B = BSPP N = NPT U = UNF
	3/8"	
	1/2"	
	3/4"	
	1"	
	1 1/4"	
	1 1/2"	

Hidrolik Şema / Hydraulic Circuit

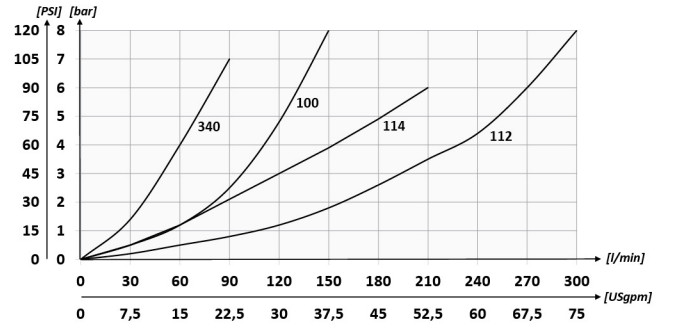
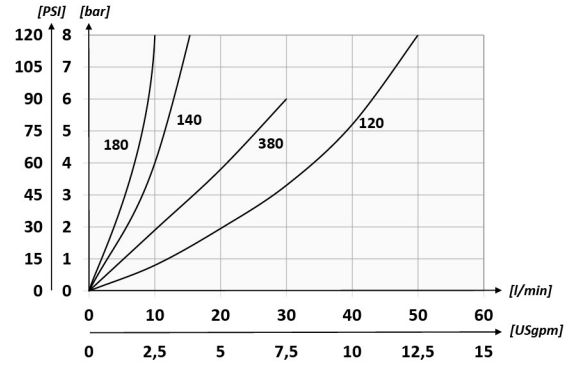


Direkt Hat Üzerine Montaja Uygun / Suitable For Direct In-Line Installation

Gövde Malzemesi - Body Material	Çelik / Steel DIN1.0715
Mineral Yağ - Mineral Oil	ISO 6743/4 (DIN 51524)
Yağ Viskozitesi - Oil Viscosity	10-500 mm ² /s (10 to 420 cSt)
Yağ Sıcaklığı - Oil Temperature	(-20°C +80°C)
Ortam Sıcaklığı - Environment Temperature	(-20°C +50°C)
İç Kaçak - Leakage	0 - 0.25 mm ³ /min



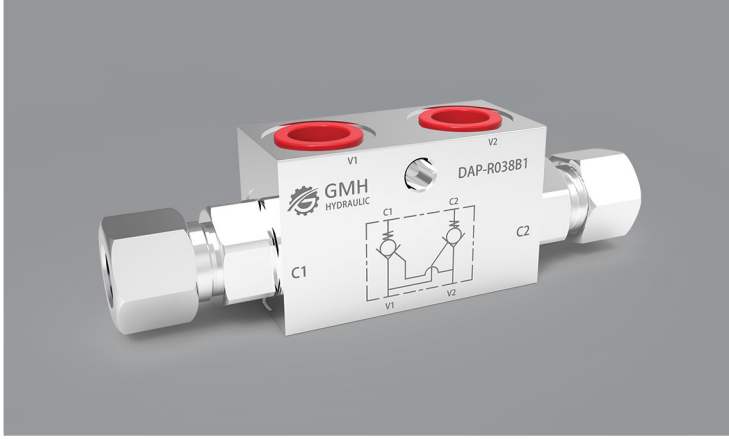
Performans / Performance



Teknik Özellikler / Technical Specifications

S.N.	Tip / Type	A	Q max (l/min)	P max (Bar)	AA (mm)	B (mm)	C (mm)	D (mm)	D1 (mm)	F (mm)	G (mm)	Ağırlık / Weight (kg)
1	GFV014B	BSPP 1/4	15	400	30	25	24,5	54	74	14	9,5	0,35
2	GFV038B	BSPP 3/8	30	400	30	25	24,5	54	74	14	9,5	0,33
3	GFV012B	BSPP 1/2	50	300	30	30	29,5	64	80	14	10,5	0,5
4	GFV034B	BSPP 3/4	80	300	36	40	39,5	80	109	23,5	16	1,15
5	GFV100B	BSPP 1	150	300	36	45	39,5	101	114	23,5	16	1,56
6	GFV114B	BSPP 1 1/4	200	250	40	55	49	101	136	23,5	13	2,42
7	GFV112B	BSPP 1 1/2	300	200	40	65	49	101	146	23,5	13	3,07

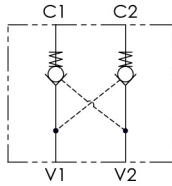
DAP-R DOUBLE ACTING PILOT CHECK VALVES - İKİZ HAT TİPİ KİLİT VALFLER



Sipariş Kodu / Order Code

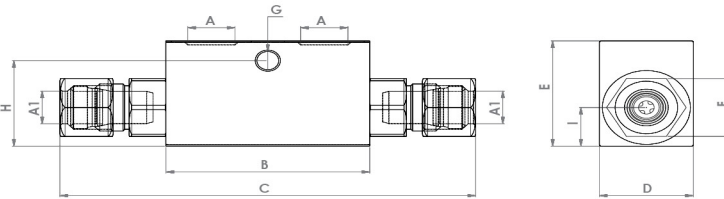
DAP-R	014	B	1
Tip / Type	Ebat / Size	Diş Tipi / Thread Type	Yay Kuvveti / Spring Force
DAP-R	1/4"	B = BSPP	1 = 1 Bar
	3/8"	N = NPT U = UNF	2 = 3 Bar

Hidrolik Şema / Hydraulic Circuit

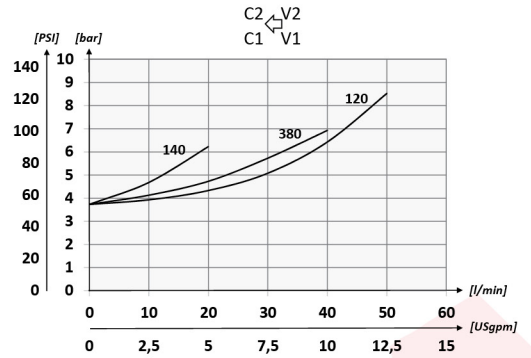
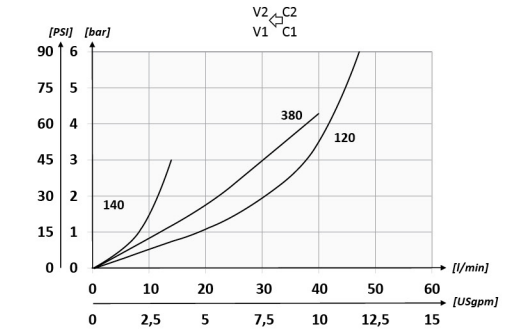


Direkt Hat Üzerine Montaja Uygun / Suitable For Direct In-Line Installation

Gövde Malzemesi - Body Material	Çelik / Steel DIN1.0715
Mineral Yağ - Mineral Oil	ISO 6743/4 (DIN 51524)
Yağ Viskozitesi - Oil Viscosity	10-500 mm ² /s (10 to 420 cSt)
Yağ Sıcaklığı - Oil Temperature	(-20°C +80°C)
Ortam Sıcaklığı - Environment Temperature	(-20°C +50°C)
İç Kaçak - Leakage	0 - 0.25 mm ³ /min



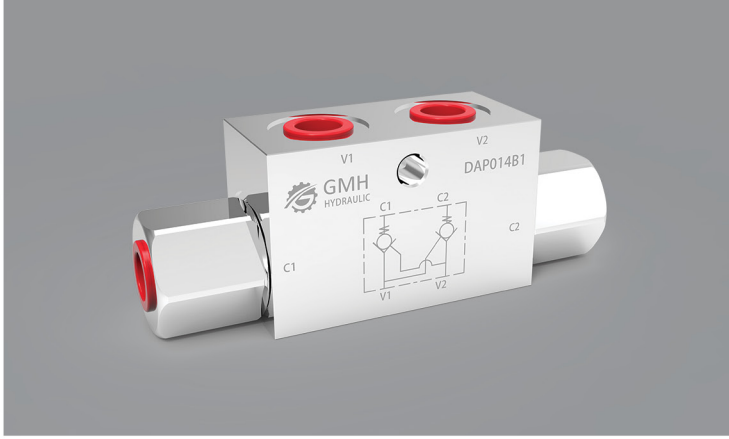
Performans / Performance



Teknik Özellikler / Technical Specifications

S.N.	Tip / Type	A	Q max (l/min)	P max (Bar)	A1 (M18X1,5)	B (mm)	C (mm)	D (mm)	E (mm)	F (mm)	G (mm)	H (mm)	I (mm)	Ağırlık / Weight (kg)
1	DAP-R014B1	BSPP 1/4	15	350	12	63	132	30	40	12,75	6,4	32,5	22	0,67
2	DAP-R038B1	BSPP 3/8	35		12	63	132	30	40	12,75	6,4	32,5	22	0,63

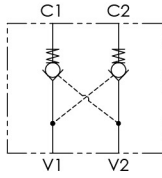
DAP DOUBLE ACTING PILOT CHECK VALVES - İKİZ HAT TİPİ KİLİT VALFLER



Sipariş Kodu / Order Code

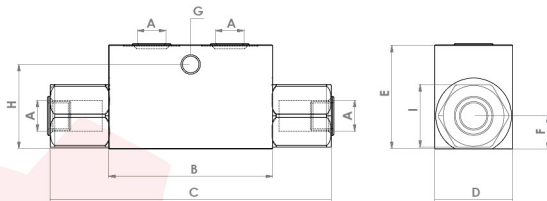
DAP	014	B	1
Tip / Type	Ebat / Size	Diş Tipi / Thread Type	Yay Kuvveti / Spring Force
DAP	1/4"	B = BSPP N = NPT U = UNF	1 = 1 Bar
	3/8"		2 = 3 Bar
	1/2"		
	3/4"		

Hidrolik Şema / Hydraulic Circuit

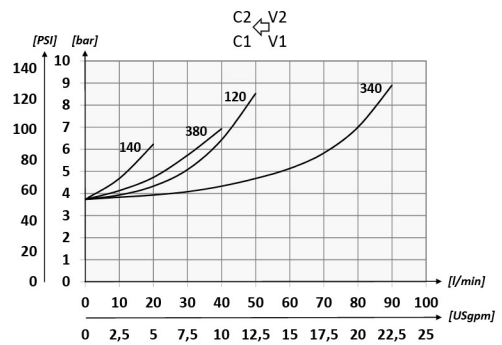
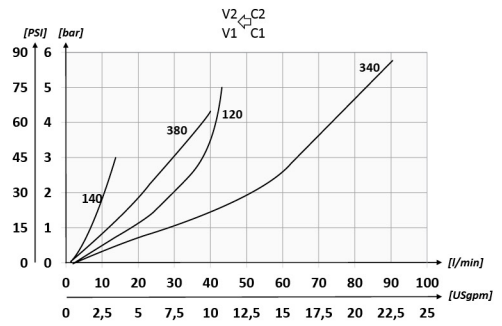


Direkt Hat Üzerine Montaja Uygun / Suitable For Direct In-Line Installation

Gövde Malzemesi - Body Material	Çelik / Steel DIN1.0715
Mineral Yağ - Mineral Oil	ISO 6743/4 (DIN 51524)
Yağ Viskozitesi - Oil Viscosity	10-500 mm ² /s (10 to 420 cSt)
Yağ Sıcaklığı - Oil Temperature	(-20°C +80°C)
Ortam Sıcaklığı - Environment Temperature	(-20°C +50°C)
İç Kaçak - Leakage	0 - 0.25 mm ³ /min



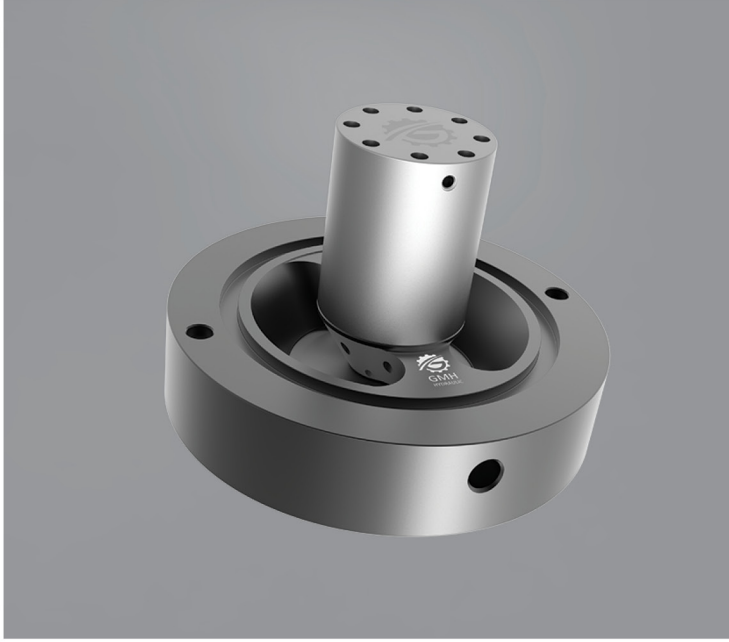
Performans / Performance



Teknik Özellikler / Technical Specifications

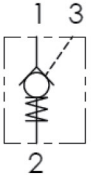
S.N.	Tip / Type	A	Q max (l/min)	P max (Bar)	B (mm)	C (mm)	D (mm)	E (mm)	F (mm)	G (mm)	H (mm)	I (mm)	Ağırlık / Weight (kg)
1	DAP014B1	BSPP 1/4	15	350	63	108	30	40	12,75	6,4	32,5	24	0,66
2	DAP038B1	BSPP 3/8	35		63	108	30	40	12,75	6,4	32,5	24	0,62
3	DAP012B1	BSPP 1/2	45		82	142	40	50	15,3	6,4	42,5	27	1,28
4	DAP034B1	BSPP 3/4	70		100	192	40	60	18,8	8,5	50	36	2,03

SVF PREFILL VALVES - ÖN DOLUM VALFLERİ



Sipariş Kodu / Order Code

SVF	80					
Tip / Type	Ebat / Size					
SVF	25	32	40	50	63	80
	100	125	160	200	250	-



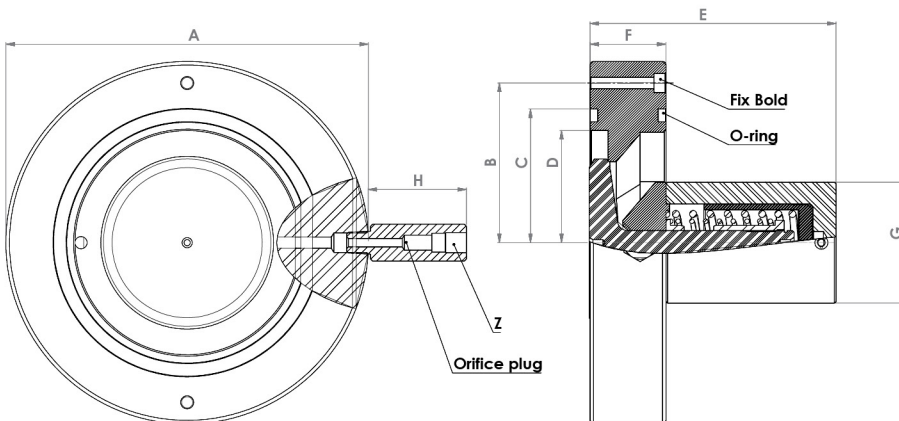
Hidrolik Şema / Hydraulic Circuit

Özellikler / Features

Flanş Sıkmalı Ön Dolu - Pre-Fill Valve With Clamped Flange	
Gövde Malzemesi - Body Material	Çelik / Steel DIN 1.7225
Yağ Viskozitesi - Oil Viscosity	10 - 500 mm ² /sn (10 to 420 cSt)
Mineral Yağ - Mineral Oil	ISO 6743/4 (DIN 51524)
İç Kaçak - Leakage	0 - 0.25 mm ³ /min

Teknik Özellikler Ve Ölçüler / Technical Specifications And Dimensions

S.N.	Tip / Type	A (mm)	B (mm)	C (mm)	D (mm)	E (mm)	F (mm)	G (mm)	H (mm)	Tespit Cıvatası / Flx Bold	Z	O-Ring
1	SVF25	80	-	53	38	65	27	28	62	-	G 1/4"	1517-3
2	SVF32	82	-	63	48	70	28	33		-	G 1/4"	1517-6
3	SVF40	108	91	73	56.5	71.5	28	39		M4x30	G 1/4"	1517-9
4	SVF50	128	112	90	72	91	29	42		M4x30	G 1/4"	1517-14
5	SVF63	143	125	105	87	106	33.5	50		M5x35	G 1/4"	P95
6	SVF80	169	150	130.5	108	115	38.5	57		M5x40	G 1/4"	P120
7	SVF100	210	185	155	130	150	44	70		M6x45	G 1/4"	P145
8	SVF125	248	226	200	170	195	51	89	M6x60	G 1/4"	P185	
9	SVF160	310	284	250	218	230	70	120	70	M8x70	G 3/8"	P235
10	SVF200	390	355	310	272	300	95	145	85	M10x95	G 1/2"	P295
11	SVF250	490	445	398	350	390	110	176	85	M12x115	G 1/2"	P375



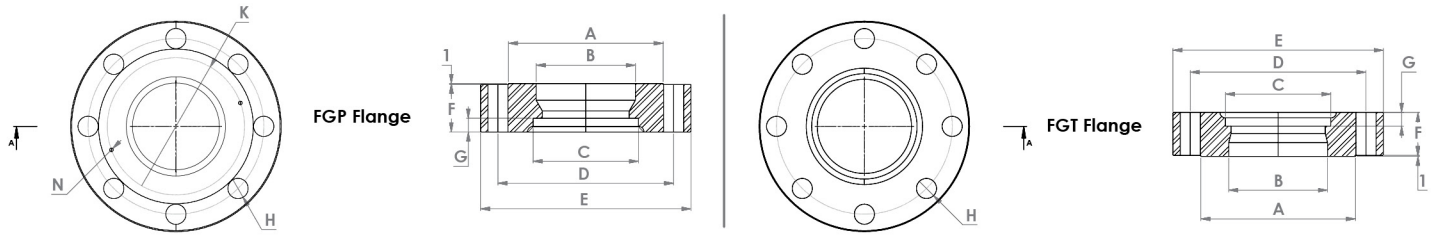
Orifis Tapa Opsiyonu / Orifice Plug Options

Ölçü / Size	Orifis	Tapa
SVF - 25-32-40-50	0,7 mm	G 1/8"
SVF-63	0,8 mm	
SVF-80	1,0 mm	
SVF-100	1,2 mm	
SVF-125-160	1,5 mm	G 1/4"
SVF-200	1,8 mm	
SVF-250	2,5 mm	
		G 3/8"

FGP - FGT FLANGES - FLANŞLAR

Teknik Özellikler Ve Ölçüler / Technical Specifications And Dimensions

S.N.	Tip / Type	Debi - Flow Qmax (L/min)	Çalışma Basıncı -Op. Pressure Pmax (Bar)	Pilot Oranı - Pilot Ratio	Cıvata - Bolt	Boru Ebadı - Pipe Size	Ağırlık - Weight Kg
1	SVF25	100	400	4.3	M12x4	1 1/2"	1.2
2	SVF32	160	400	3.6	M16x4	2"	1.3
3	SVF40	250	400	3.3	M20x4	2 1/2"	2.2
4	SVF50	400	400	3.8	M16x6	3"	2.9
5	SVF63	630	400	4.2	M16x8	3 1/2"	4.5
6	SVF80	1000	400	4.3	M20x8	4"	6.2
7	SVF100	1600	400	4.3	M25x10	5"	12.3
8	SVF125	2500	400	4.3	M25x16	8"	23
9	SVF160	4000	400	4.2	M30x16	10"	50
10	SVF200	7000	280	4.1	M30x20	12"	85
11	SVF250	15000	280	4.4	M30x24	16"	156



FGP - FGT Flanş Ölçüleri / FGP - FGT Flange Dimensions

S.N.	Ölçü - Size	A (mm)	B (mm)	C (mm)	D (mm)	E (mm)	F (mm)	G (mm)	H	K (mm)	N
1	FGP-25 FGT-25	M12	80	38	48,3	95	126	33	15	Ø14 - 4	-
2	FGP-32 FGT-32	M16	82	48	60,25	103,2	135	33	15	Ø18 - 4	-
3	FGP-40 FGT-40	M20	107	57	77	130	165	42	15	Ø22 - 4	94
4	FGP-50 FGT-50	M16	128	72	90	146	180	42	15	Ø18 - 6	112
5	FGP-63 FGT-63	M16	143	87	102,2	161	195	52/47	15	Ø18 - 8	125
6	FGP-80 FGT-80	M20	169	108	115,2	192	230	52/47	15	Ø22 - 8	150
7	FGP-100 FGT-100	M25	210	130	141	239	280	68/62	25	Ø27 - 10	185
8	FGP-125 FGT-125	M25	249	168	219,2	300	352	77/67	25	Ø27 - 16	226
9	FGP-160 FGT-160	M30	311	218	273,1	367	422	87/77	30	Ø33 - 16	284
10	FGP-200 FGT-200	M30	391	270	324	422	510	97/87	30	Ø33 - 20	355
11	FGP-250 FGT-250	M30	492	350	407	555	630	107/97	30	Ø33 - 24	445



GEZMAKSAN

MAKİNA İNŞAAT SANAYİ VE TİCARET LTD. ŞTİ.

- 📍 Fevzi Çakmak Mahallesi Gülistan Caddesi
Atiker 3 Sanayi Sitesi 23/H Karatay/KONYA
- ☎ 0 332 248 85 88 ✉ export@gmhhydraulic.com
- ✉ info@gmhhydraulic.com • info@gmhhidrolik.com
- 📱 /gmhhydraulic 📺 /GMH Hydraulic



www.GmhHydraulic.com • www.GmhHidrolik.com